

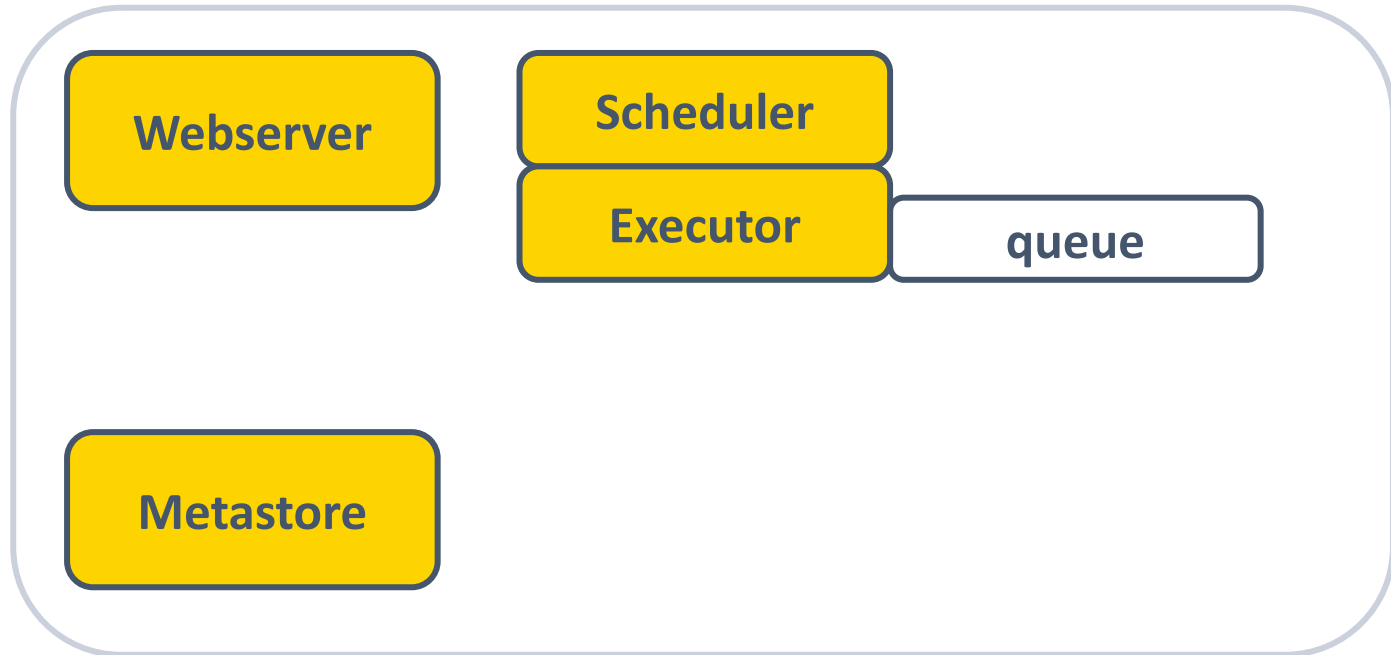
Дата-инженер

# Компоненты Airflow. Исполнитель (Executor)

Ася Гайламазян



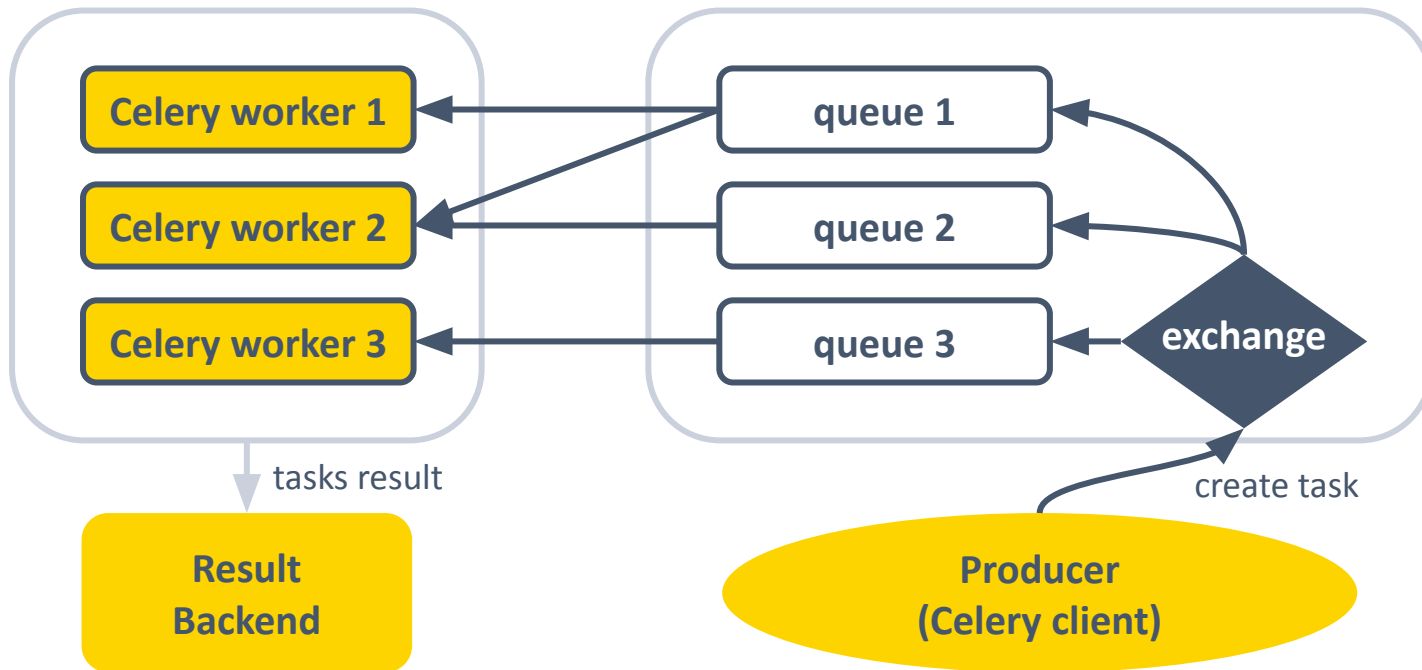
# Базы данных и executors



# Celery-кластер

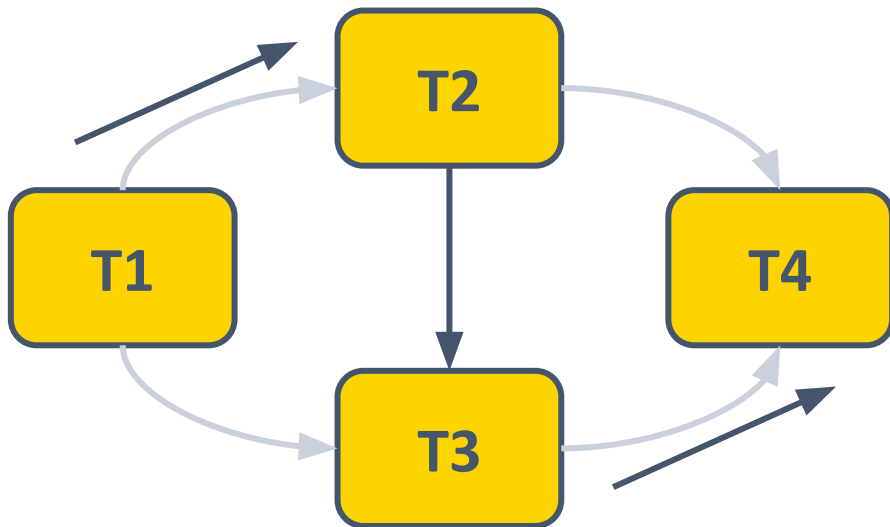
Consumer (Celery workers)

Broker (RabbitMQ/Redis/etc)



# Sequential Executor (последовательный)

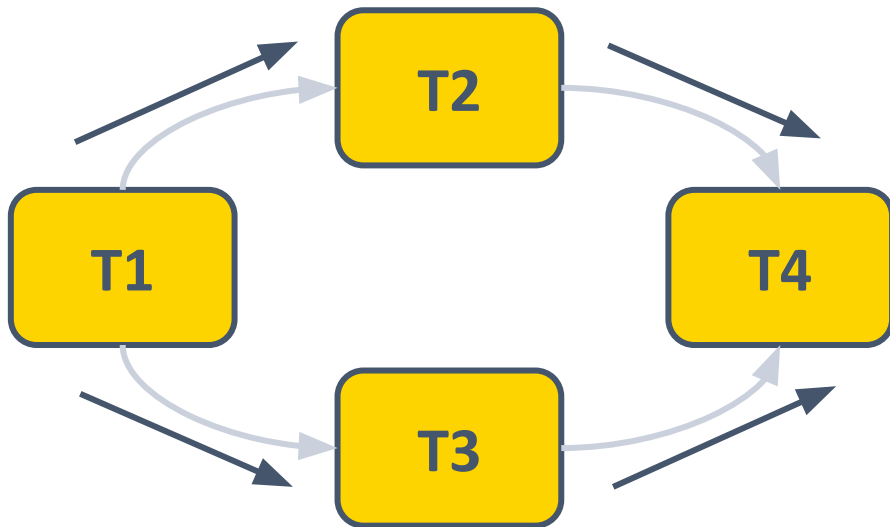
executor=SequentialExecutor



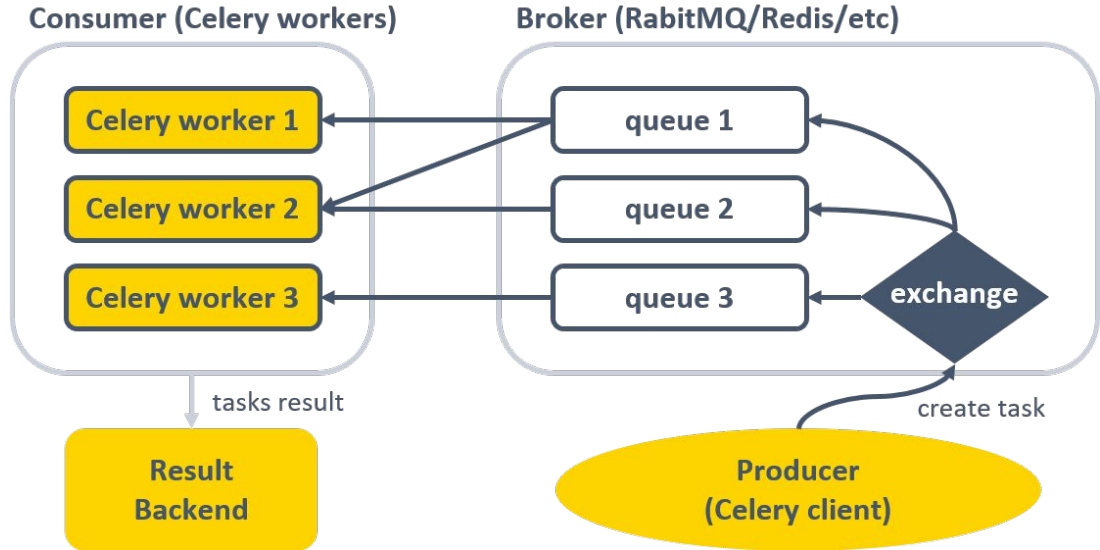
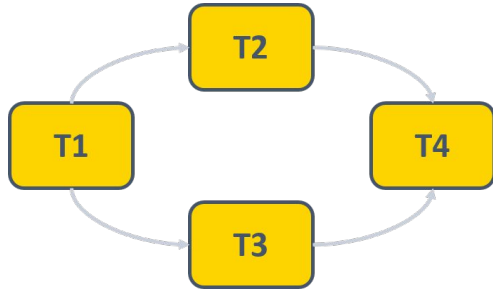
## Local Executor

executor=LocalExecutor

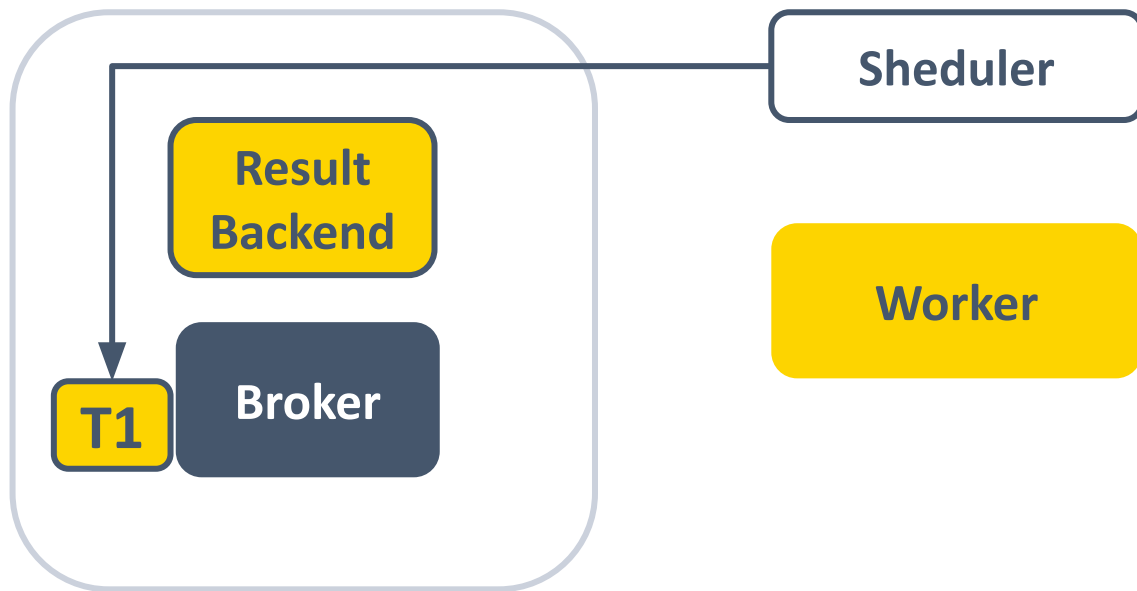
```
sql_alchemy_conn=db+psycorg2://{user}:{password}
@{host}:{port}/airflow
```



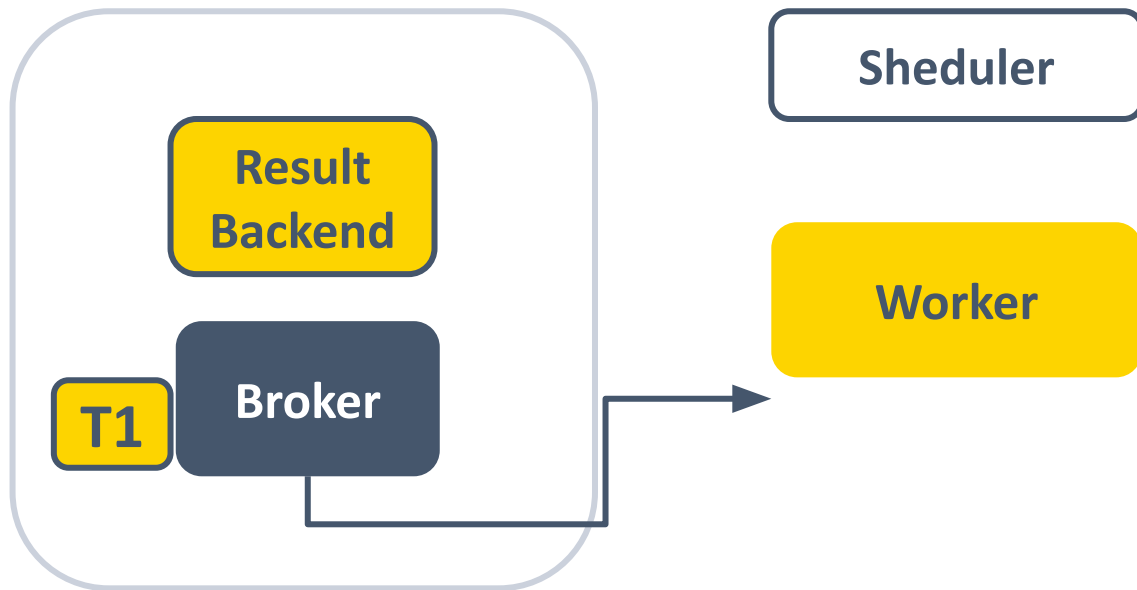
# Celery Executor



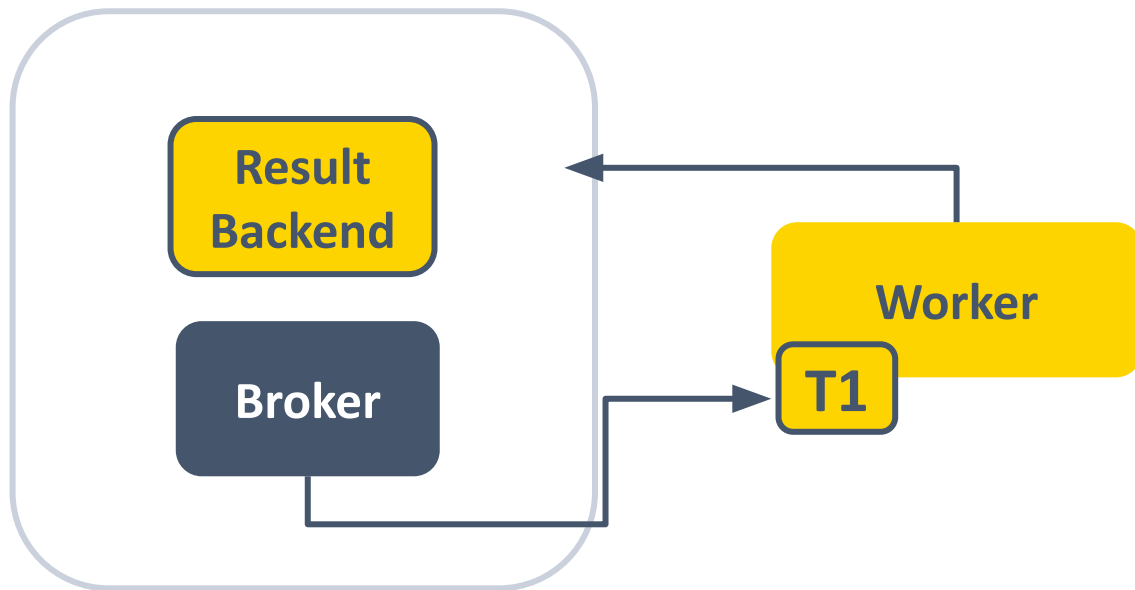
# Пример прохождения таском пайплайна в случае Celery Executor



# Пример прохождения таском пайплайна в случае Celery Executor



# Пример прохождения таском пайплайна в случае Celery Executor



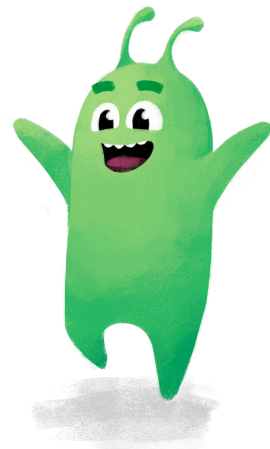
# Механизм работы Celery Executor

```
executor=CeleryExecutor
```

```
sql_alchemy_conn=db+psycorg2://{user}:{password}@{host}:{port}/airflow
```

```
celery_result_backend=db+postgresql://airflow:****@postgres/airflow
```

```
broker_url= pyamqp://{guest:guest}@{RabbitMQ-HOSTNAME}:5672/
```





**Спасибо  
за внимание!**

